



REVISED 2021 SAILING SCHEDULE

As of September 20, 2020

VOYAGE No. 1	Departure Arrival	05 January 17 January	Tuesday Sunday	CANCELLED
VOYAGE No. 2*	Departure Arrival	19 January 31 January	Tuesday Sunday	\$500 off Regular Staterooms - \$1000 off Deluxe Staterooms and above, per person. No single supplement.
VOYAGE No. 3*	Departure Arrival	06 February 18 February	Saturday Thursday	\$500 off Regular Staterooms - \$1000 off Deluxe Staterooms and above, per person. No single supplement.
VOYAGE No. 3A*	Departure Arrival	20 February 04 March	Saturday Thursday	\$500 off Regular Staterooms - \$1000 off Deluxe Staterooms and above, per person. No single supplement.
VOYAGE No. 4*	Departure Arrival	06 March 18 March	Saturday Thursday	\$500 off Regular Staterooms - \$1000 off Deluxe Staterooms and above, per person. No single supplement.
VOYAGE No. 5*	Departure Arrival	20 March 01 April	Saturday Thursday	\$500 off Regular Staterooms - \$1000 off Deluxe Staterooms and above, per person. No single supplement.
VOYAGE No. 6*	Departure Arrival	08 April 20 April	Thursday Tuesday	
VOYAGE No. 7*	Departure Arrival	24 April 06 May	Saturday Thursday	
VOYAGE No. 8	Departure Arrival	08 May 17 May	Saturday Monday	Discovery: Austral Islands
VOYAGE No. 9	Departure Arrival	22 May 03 June	Saturday Thursday	
VOYAGE No. 10	Departure Arrival	10 June 22 June	Thursday Tuesday	
VOYAGE No. 11	Departure Arrival	26 June 08 July	Saturday Thursday	
VOYAGE No. 12	Departure Arrival	15 July 27 July	Thursday Tuesday	
VOYAGE No. 13	Departure Arrival	05 August 17 August	Thursday Tuesday	
VOYAGE No. 14	Departure Arrival	21 August 02 September	Saturday Thursday	
VOYAGE No. 15	Departure Arrival	04 September 16 September	Saturday Thursday	Discovery: Austral - Cook Islands
VOYAGE No. 16	Departure Arrival	18 September 30 September	Saturday Thursday	
VOYAGE No. 17	Departure Arrival	07 October 19 October	Thursday Tuesday	
VOYAGE No. 18*	Departure Arrival	23 October 04 November	Saturday Thursday	
VOYAGE No. 19*	Departure Arrival	06 November 18 November	Saturday Thursday	
VOYAGE No. 20*	Departure Arrival	27 November 09 December	Saturday Thursday	
VOYAGE No. 21*	Departure Arrival	16 December 28 December	Thursday Tuesday	Marquesan Arts Festival (Fatu Hiva)

Note: Discounts are not applicable to group bookings and cannot be combined with any other discounts.

*Makatea will replace Rangiroa as our second stop in the Tuamotu

MARQUESAS ISLANDS

13 Days/12 Nights

Prices include 3 meals with complimentary wine (1 bottle for every 4 guests) onboard, guided excursions, picnic and meals on shore. Optional excursions such as scuba diving, horseback riding, fishing and helicopter tours are not included.

Category	Base Fare	Tourism Tax	Cruise Tax	Port Tax	Total Taxes	Total Fare with Taxes
Presidential Suite						
Double Occupancy	\$10,290.00	\$463.05	\$9.10	\$220.00	\$692.15	\$10,982.15
Single Occupancy	\$15,435.00	\$694.58	\$9.10	\$220.00	\$923.68	\$16,358.68
Royal Suite						
Double Occupancy	\$8,080.00	\$363.60	\$9.10	\$220.00	\$592.70	\$8,672.70
Single Occupancy	\$12,120.00	\$545.40	\$9.10	\$220.00	\$774.50	\$12,894.50
Royal Suite – Obstructed						
Double Occupancy	\$7,730.00	\$347.85	\$9.10	\$220.00	\$576.95	\$8,306.95
Single Occupancy	\$11,595.00	\$521.78	\$9.10	\$220.00	\$750.88	\$12,345.88
Premium Suite						
Double Occupancy	\$7,380.00	\$332.10	\$9.10	\$220.00	\$561.20	\$7,941.20
Single Occupancy	\$11,070.00	\$498.15	\$9.10	\$220.00	\$727.25	\$11,797.25
Junior Suite						
Double Occupancy	\$7,070.00	\$318.15	\$9.10	\$220.00	\$547.25	\$7,617.25
Single Occupancy	\$10,605.00	\$477.23	\$9.10	\$220.00	\$706.33	\$11,311.33
Superior Deluxe						
Double Occupancy	\$6,680.00	\$300.60	\$9.10	\$220.00	\$529.70	\$7,209.70
Single Occupancy	\$10,020.00	\$450.90	\$9.10	\$220.00	\$680.00	\$10,700.00
Deluxe						
Double Occupancy	\$6,170.00	\$277.65	\$9.10	\$220.00	\$506.75	\$6,676.75
Single Occupancy	\$9,255.00	\$416.48	\$9.10	\$220.00	\$645.58	\$9,900.58
Single Stateroom (Only two available)						
	\$7,164.00	\$322.38	\$9.10	\$220.00	\$551.48	\$7,715.48
Regular Stateroom						
Double Occupancy	\$5,120.00	\$230.40	\$9.10	\$220.00	\$459.50	\$5,579.50
Single Occupancy	\$7,680.00	\$345.60	\$9.10	\$220.00	\$574.70	\$8,254.70
Regular Stateroom – Obstructed						
Double Occupancy	\$4,860.00	\$218.70	\$9.10	\$220.00	\$447.80	\$5,307.80
Single Occupancy	\$7,290.00	\$328.05	\$9.10	\$220.00	\$557.15	\$7,847.15
Class "C" (Dorm)						
	\$3,200.00	\$144.00	\$9.10	\$220.00	\$373.10	\$3,573.10

Prices are per person in USD

ARANUI CLASSIC MARQUESAS ITINERARIES

Boarding Time: 7:00 am to 9:00 am Tahiti Arrival: 9:00 am

THURSDAY DEPARTURE

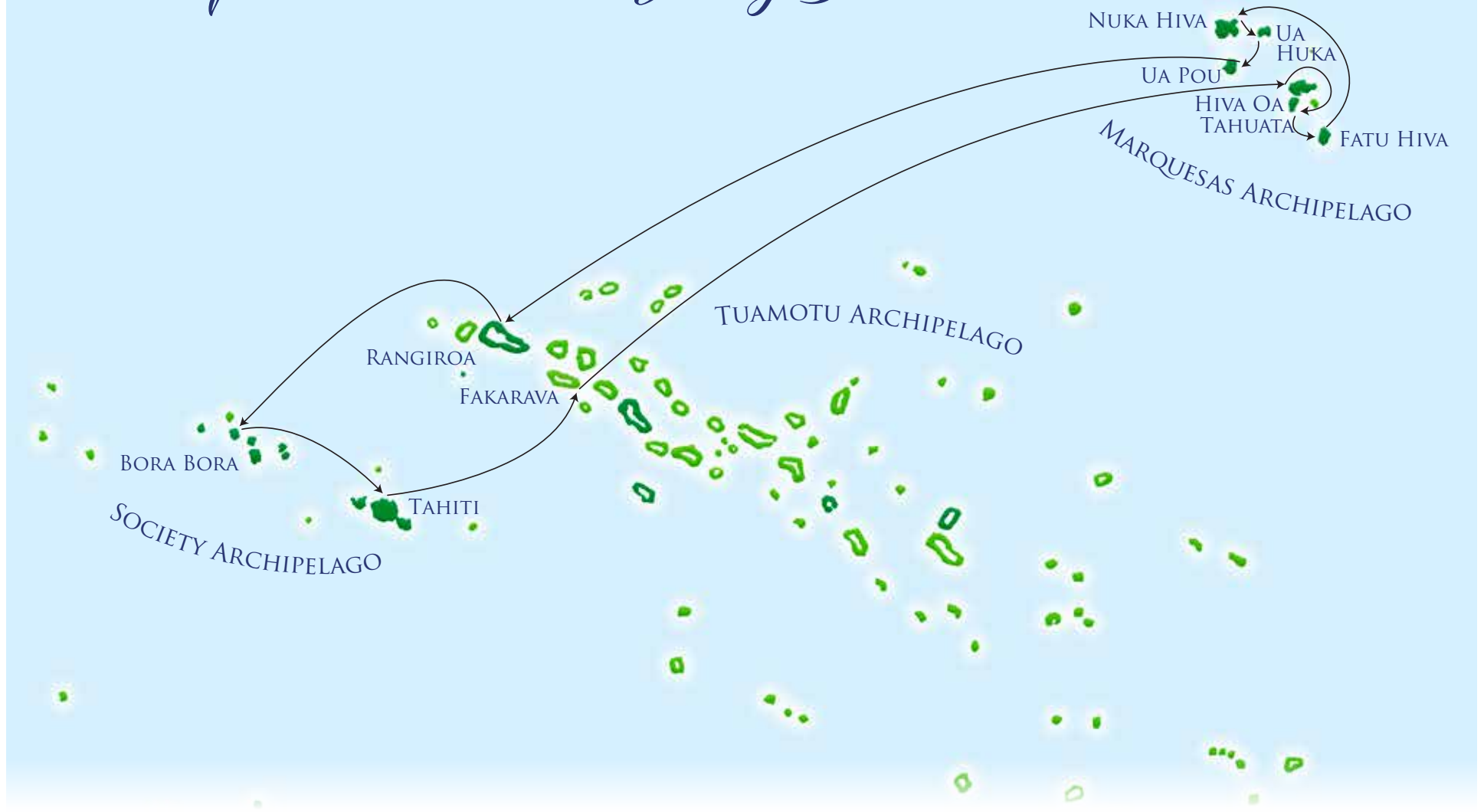
Day 1	Thursday	Departure Tahiti (Papeete)
Day 2	Friday	Fakarava
Day 3	Saturday	At Sea
Day 4	Sunday	Hiva Oa (Puamau)–Tahuata (Vaitahu)
Day 5	Monday	Hiva Oa (Atuona)–Tahuata (Kokuu)
Day 6	Tuesday	Fatu Hiva (Omoa – Hanavave)
Day 7	Wednesday	Nuku Hiva (Taiohae)
Day 8	Thursday	Ua Huka (Vaipaeae)
Day 9	Friday	Ua Pou (Hakahau)
Day 10	Saturday	At Sea
Day 11	Sunday	Rangiroa (Otohu)
Day 12	Monday	Bora Bora (Vaitape)
Day 13	Tuesday	Return Tahiti (Papeete)

SATURDAY DEPARTURE

Day 1	Saturday	Departure Tahiti (Papeete)
Day 2	Sunday	Fakarava
Day 3	Monday	At Sea
Day 4	Tuesday	Nuku Hiva (Taiohae)
Day 5	Wednesday	Ua Huka (Vaipaeae)
Day 6	Thursday	Ua Pou (Hakahau)
Day 7	Friday	Hiva Oa (Atuona) – Tahuata (Kokuu)
Day 8	Saturday	Hiva Oa (Puamau) – Tahuata (Vaitahu)
Day 9	Sunday	Fatu Hiva (Omoa - Hanavave)
Day 10	Monday	At Sea
Day 11	Tuesday	Rangiroa (Otohu)
Day 12	Wednesday	Bora Bora (Vaitape)
Day 13	Thursday	Return Tahiti (Papeete)

These itineraries may be modified due to technical, meteorological reasons or freight constraints. Depending on seaconditions, some disembarkment may not be possible due to safety reasons.

Marquesas, Tuamotu & Society Islands



AUSTRAL/COOK ISLANDS

13 Days/12 Nights

Prices include 3 meals daily with complimentary wine onboard (1 bottle for every 4 guests) onboard during lunch and dinner and guided excursions.

Category	Base Fare	Tourism Tax	Cruise Tax	Port Tax	Total Taxes	Total Fare with Taxes
Presidential Suite						
Double Occupancy	\$11,830.00	\$532.35	\$9.10	\$220.00	\$761.45	\$12,591.45
Single Occupancy	\$23,660.00	\$1,064.70	\$9.10	\$220.00	\$1,293.80	\$24,953.80
Royal Suite						
Double Occupancy	9,290.00	\$418.05	\$9.10	\$220.00	\$647.15	\$9,937.15
Single Occupancy	\$18,580.00	\$836.10	\$9.10	\$220.00	\$1,065.20	\$19,645.20
Royal Suite – Obstructed						
Double Occupancy	\$8,890.00	\$400.05	\$9.10	\$220.00	\$629.15	\$9,519.15
Single Occupancy	\$17,780.00	\$800.10	\$9.10	\$220.00	\$1,029.20	\$18,809.20
Premium Suite						
Double Occupancy	\$8,490.00	\$382.05	\$9.10	\$220.00	\$611.15	\$9,101.15
Single Occupancy	\$16,980.00	\$764.10	\$9.10	\$220.00	\$993.20	\$17,973.20
Junior Suite						
Double Occupancy	\$8,130.00	\$365.85	\$9.10	\$220.00	\$594.95	\$8,724.95
Single Occupancy	\$16,260.00	\$731.70	\$9.10	\$220.00	\$960.80	\$17,220.80
Superior Deluxe						
Double Occupancy	\$7,680.00	\$345.60	\$9.10	\$220.00	\$574.70	\$8,254.70
Single Occupancy	\$15,360.00	\$691.20	\$9.10	\$220.00	\$920.30	\$16,280.30
Deluxe						
Double Occupancy	\$7,100.00	\$319.50	\$9.10	\$220.00	\$548.60	\$7,648.60
Single Occupancy	\$14,200.00	\$639.00	\$9.10	\$220.00	\$868.10	\$15,068.10
Single Stateroom (Only two available)						
	\$8,246.00	\$371.07	\$9.10	\$220.00	\$600.17	\$8,846.17
Regular Stateroom						
Double Occupancy	\$5,890.00	\$265.05	\$9.10	\$220.00	\$494.15	\$6,384.15
Single Occupancy	\$11,780.00	\$530.10	\$9.10	\$220.00	\$759.20	\$12,539.20
Regular Stateroom – Obstructed						
Double Occupancy	\$5,590.00	\$251.55	\$9.10	\$220.00	\$480.65	\$6,070.65
Single Occupancy	\$11,180.00	\$503.10	\$9.10	\$220.00	\$732.20	\$11,912.50
Class "C" (Dorm)						
	\$3,670.00	\$165.15	\$9.10	\$220.00	\$394.25	\$4,064.25

Prices are per person in USD

DISCOVERY ITINERARY SEPTEMBER 4–16, 2021

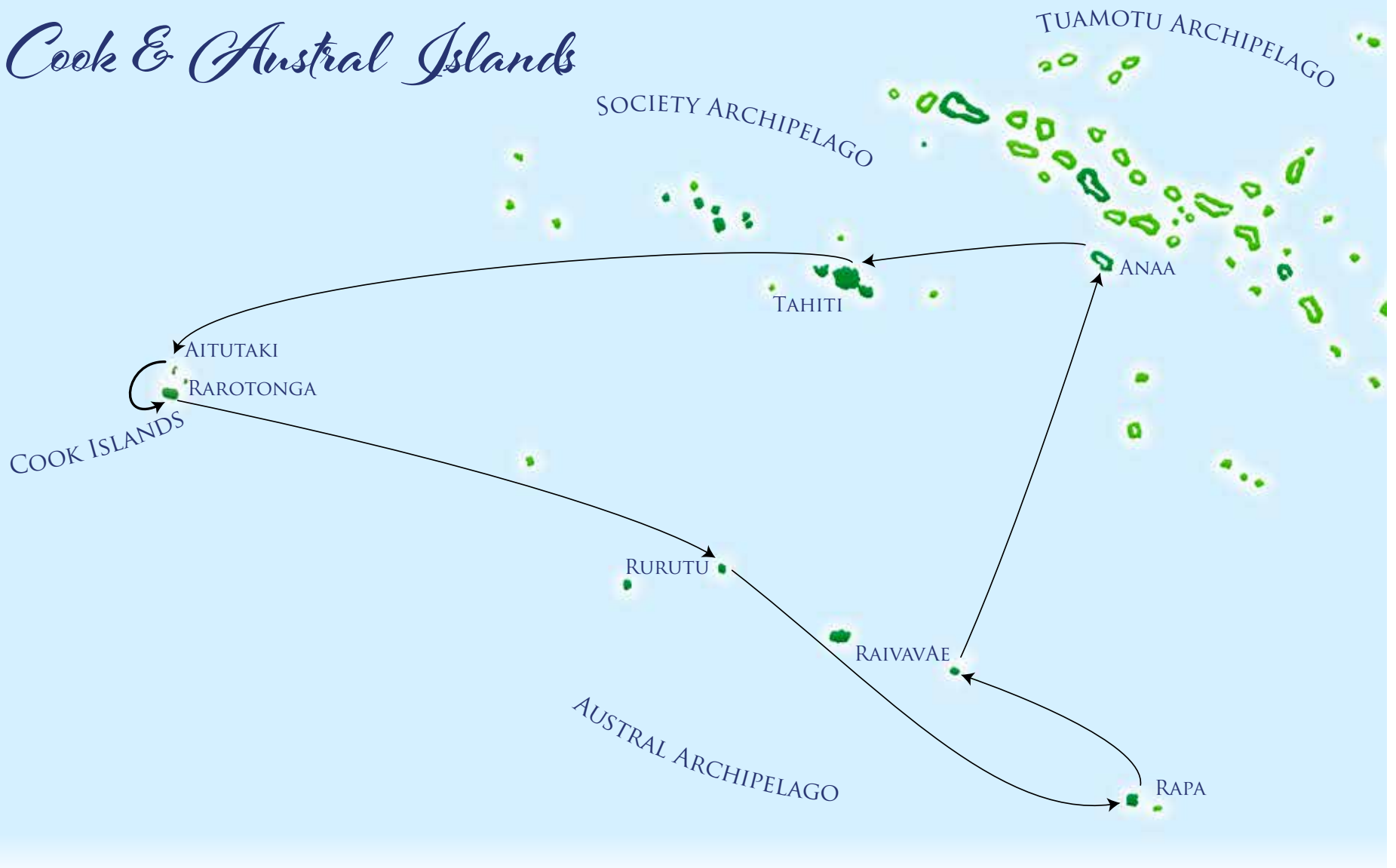
Boarding Time: 7:00 am to 9:00 am Tahiti Arrival: 9:00 am

SATURDAY DEPARTURE

Day 1	Saturday	September 4	Papeete	Day 8	Saturday	September 11	Rapa, Austral
Day 2	Sunday	September 5	At Sea	Day 9	Sunday	September 12	Raivavae, Austral
Day 3	Monday	September 6	Aitutaki, Cook Islands	Day 10	Monday	September 13	At Sea
Day 4	Tuesday	September 7	Rarotonga, Cook Islands	Day 11	Tuesday	September 14	Anaa, Tuamotu
Day 5	Wednesday	September 8	Rurutu, Austral	Day 12	Wednesday	September 15	At Sea
Day 6	Thursday	September 9	At Sea	Day 13	Thursday	September 16	Papeete
Day 7	Friday	September 10	Rapa, Austral				

This itinerary may be modified due to technical or meteorological reasons. Depending on sea conditions, some disembarkment may not be possible for safety reasons. The Aranui will not be transporting freight during this voyage.

Cook & Austral Islands



AUSTRAL ISLANDS

10 Days/9 Nights

Prices include 3 meals with complimentary wine (1 bottle for every 4 guests) onboard, guided excursions, picnic and meals on shore. Optional excursions such as scuba diving, horseback riding, fishing and helicopter tours are not included.

Category	Base Fare	Tourism Tax	Cruise Tax	Port Tax	Total Taxes	Total Fare with Taxes
Presidential Suite						
Double Occupancy	\$10,290.00	\$463.05	\$9.10	\$220.00	\$692.15	\$10,982.15
Single Occupancy	\$15,435.00	\$694.58	\$9.10	\$220.00	\$923.68	\$16,358.68
Royal Suite						
Double Occupancy	\$8,080.00	\$363.60	\$9.10	\$220.00	\$592.70	\$8,672.70
Single Occupancy	\$12,120.00	\$545.40	\$9.10	\$220.00	\$774.50	\$12,894.50
Royal Suite – Obstructed						
Double Occupancy	\$7,730.00	\$347.85	\$9.10	\$220.00	\$576.95	\$8,306.95
Single Occupancy	\$11,595.00	\$521.78	\$9.10	\$220.00	\$750.88	\$12,345.88
Premium Suite						
Double Occupancy	\$7,380.00	\$332.10	\$9.10	\$220.00	\$561.20	\$7,941.20
Single Occupancy	\$11,070.00	\$498.15	\$9.10	\$220.00	\$727.25	\$11,797.25
Junior Suite						
Double Occupancy	\$7,070.00	\$318.15	\$9.10	\$220.00	\$547.25	\$7,617.25
Single Occupancy	\$10,605.00	\$477.23	\$9.10	\$220.00	\$706.33	\$11,311.33
Superior Deluxe						
Double Occupancy	\$6,680.00	\$300.60	\$9.10	\$220.00	\$529.70	\$7,209.70
Single Occupancy	\$10,020.00	\$450.90	\$9.10	\$220.00	\$680.00	\$10,700.00
Deluxe						
Double Occupancy	\$6,170.00	\$277.65	\$9.10	\$220.00	\$506.75	\$6,676.75
Single Occupancy	\$9,255.00	\$416.48	\$9.10	\$220.00	\$645.58	\$9,900.58
Single Stateroom						
(Only two available)	\$7,164.00	\$322.38	\$9.10	\$220.00	\$551.48	\$7,715.48
Regular Stateroom						
Double Occupancy	\$5,120.00	\$230.40	\$9.10	\$220.00	\$459.50	\$5,579.50
Single Occupancy	\$7,680.00	\$345.60	\$9.10	\$220.00	\$574.70	\$8,254.70
Regular Stateroom – Obstructed						
Double Occupancy	\$4,860.00	\$218.70	\$9.10	\$220.00	\$447.80	\$5,307.80
Single Occupancy	\$7,290.00	\$328.05	\$9.10	\$220.00	\$557.15	\$7,847.15
Class "C" (Dorm)						
	\$3,200.00	\$144.00	\$9.10	\$220.00	\$373.10	\$3,573.10

Prices are per person in USD

DISCOVERY ITINERARY MAY 8-17, 2021

Boarding Time: 7:00 am to 9:00 am Tahiti Arrival: 9:00 am

Day 1	Saturday	May 8	Papeete	Day 6	Thursday	May 13	Rapa
Day 2	Sunday	May 9	At sea	Day 7	Friday	May 14	Rapa leave at noon
Day 3	Monday	May 10	Rurutu	Day 8	Saturday	May 15	Raivave
Day 4	Tuesday	May 11	Tubuai	Day 9	Sunday	May 16	At sea
Day 5	Wednesday	May 12	At sea	Day 10	Monday	May 17	Papeete

Austral Islands



GENERAL INFORMATION & CONDITIONS

TARIFF

The published fares are correct at time of release and are subject to change without prior notice. These are official Aranui rates and should be the ones published in brochures and websites. Featuring Aranui rates lower than our published rates are not allowed. Prices are per person in USD and must be applied to all reservations for persons residing in the Americas.

- Prices are per person based on double occupancy, or otherwise stated as single occupancy.
- Class "C" dorm is sold by the berth. Single occupancy is not possible unless purchase of all berths in that dorm cabin.
- Children's fare are at 50% of the base tariff for children ages of 3 to 14 years old for all categories except class "C" dorm and single stateroom.
- Children are not accepted in the class "C" dorm cabins.
- Triple/Quadruple occupancy – third & fourth adult sharing cabin are 25% less of full base tariff.

All prices include planned shore excursions to remote villages, archaeological sites with lecturers on site and onboard, cultural dance shows, hiking, 4x4 sightseeing tours accompanied by French, German and English speaking guides. Three meals per day are provided with a bottle of wine to share between 4 passengers for onboard lunches and dinners. Meals on shore are either picnics or at local restaurants.

PROMOTIONAL VOYAGES

Low Season Discount – Offered on voyage 2, sailing January 28, 2021 only. A ten percent (10%) discount is applicable to all categories of accommodations on that sailing and does not apply to children's fare. Discount cannot be combined with any other discounts.

Senior Discount – Offered on Voyage 3, sailing February 13, 2021 only. A ten percent (10%) discount is offered to anyone ages 60 years and over at time of sailing for all categories of accommodations. Proof of eligibility is required. A copy of the guest's passport will be needed at time of booking to receive the discount. Discount cannot be combined with any other discounts.

REPEAT GUESTS

All guests who had booked and sailed the full cruise in the past onboard the Aranui will qualify for an onboard credit of \$250. The credit can be used for purchases at the Boutique, Bars, Restaurant, Deep Sea Fishing and Spa. It is not transferable and has no cash value. Any unused portion will be voided at the end of the voyage. The original ticket or invoice of the previous trip will be required at time of booking for the credit.

INDIVIDUAL RESERVATIONS

- A. Payment Conditions:** A 25% deposit of the base fare will be required to be paid within 7 days of the booking confirmation held by CPTM/Aranui reservation office. Full settlement of the remaining balance for each passenger or booking must be received no later than 90 days prior to departure. CPTM reserves the right to cancel any booking not fully paid at final payment due date.
- B. Reservations are not transferrable**
- C. Changes:** After CPTM issues a confirmation, any changes to the confirmed departure date made at Passenger's or travel agent's request will be subject to the same penalties applied to cancellations.
- D. Mandatory Passenger Form:** The passenger information form must be completed and returned to our office no later than final payment date. Travel documents will not be released until the form is received by our office. Failure to do so will also delay the approval by the local Port Authorities for your access to the restricted area for boarding.
- E. Age Limit/Medical:** While there is no age limit requirement, we request all passengers be in good physical condition. This is an adventure cruise. Therefore, guests over the age of 79 will need to provide a note from their doctor giving consent to travel. There is a doctor onboard. If any person has or is suffering from a serious ailment or condition, he or she should seek the advice and consent of their personal physician prior to embarking onboard the vessel. The right is reserved to refuse passage to anyone in

such a state of health or physical condition as to be unfit to travel or whose condition, for whatever reason, might be dangerous to the individual or other passengers. CPTM is not responsible for hospital, medical, and/or evacuation charges incurred by the passengers. We strongly recommend passengers obtain the necessary insurance to cover medical, travel cancellation and/or interruption.

- D. Contact:** For information regarding reservations, availability, and all other inquiries contact Sandy Yip at our San Mateo office: Telephone: (650) 574-2575 x21 or (800) 972-7268 x21 Email: syip@aranui.com Hours: 8:30am to 4:30pm Monday through Friday

GROUP RESERVATIONS

Group reservations are not available on the Pitcairn & Gambier Islands and Austral & Cook Islands Discovery Cruises.

CANCELLATION POLICY:

For all Marquesas Cruises and Discovery Austral Islands Cruise (V08/21):

- 91 days or more prior to departure: Administrative Fee of \$200 per person
- Between 90–61 days prior to departure: Forfeiture of the 25% deposit
- Between 60–45 days prior to departure: 1/3 of cost of voyage will be retained
- Between 44–30 days prior to departure: 2/3 of cost of voyage will be retained
- Less than 30 days: the full cost will be retained

For Discovery Pitcairn & Gambier Islands Cruise (V01/21) and Discovery Austral & Cook Islands Cruise (V15/21):

- 121 days or more prior to departure: Administrative Fee of \$200 per person
- Between 120–91 days prior to departure: Forfeiture of the 25% deposit
- Between 90–61 days prior to departure: 1/3 of cost of voyage will be retained
- Between 60–31 days prior to departure: 2/3 of cost of voyage will be retained
- Less than 30 days: the full cost will be retained

SA COMPAGNIE POLYNESIENNE DE TRANSPORT MARITIME

2028 El Camino Real So., Suite B, San Mateo, CA 94403 U.S.A.

Phone (650)574-2575 • (800) 972-7268 • Fax (650)574-6881

E-Mail: cptm@aranui.com Website: www.aranui.com